
HENRY MILTON WHELPLEY, PH.G., M.D.
ST. LOUIS, MO.

MAY 24, 1861

JUNE 26, 1926

President of the AMERICAN PHARMACEUTICAL ASSOCIATION, 1901-1902;

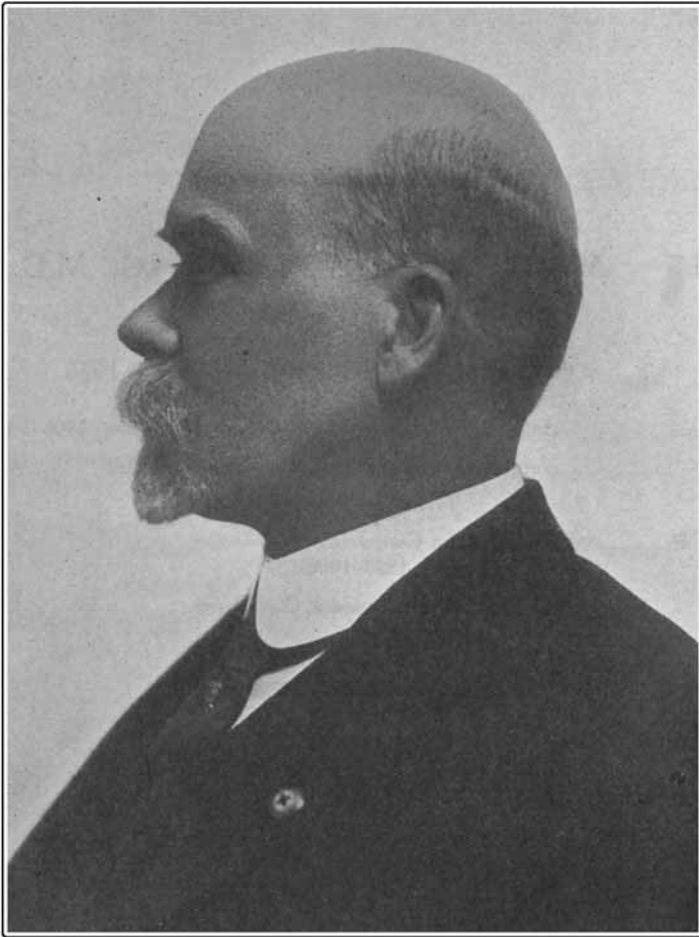
General Secretary, 1893; Secretary of the Council, 1902-1908;

Treasurer, 1908-1921.

President of the American Conference of Pharmaceutical Faculties,
1905-1906.

Secretary of U. S. Pharmacopoeial Convention, 1900-1926.

For other services rendered see sketch.



H. M. WHELPLEY.

JOURNAL OF THE AMERICAN PHARMACEUTICAL ASSOCIATION

VOL. XV

JULY, 1926

No. 7

HENRY MILTON WHELPLEY.

The news of the death of Past-President Henry M. Whelpley came as a shock and it is even now difficult to realize we shall see and hear him no more at the annual meetings of the AMERICAN PHARMACEUTICAL ASSOCIATION. For a number of years our deceased member spoke with due appreciation and regard of those who had ceased their labors, now others will speak of him. His memories of the companions of other years, their traits and qualities were always expressed in kindly words, and kept those who heard him in touch with those who had gone before. His lectures entertained and instructed his hearers.

Dr. Whelpley always had more invitations for his illustrated lectures on subjects related to pharmacy, on Indian life and lore and its connection with other activities, than he could accept. His collection of Indian flint, stone and hematite implements is known to all students of American archaeology; there are no private collections that approximate his in number, variety and finish. The slides, most of them colored by Mrs. Whelpley, number about 1000; these do not include the slides for his ASSOCIATION lectures. Dr. G. R. Throop, Assistant to the Chancellor of Washington University, said—"Archaeologists from everywhere came to study his American Indian and Mound Builders' relics." He was for more than a decade Vice-President of the St. Louis Society of the Archaeological Institute of America; served as President of the St. Louis Anthropological Society, as President of the St. Louis Academy of Science, and as a member of the Board of Control of the Missouri Historical Society, and was to assume the presidency of the latter on July 1.

Dr. Whelpley was a member of the International Jury of Award of the Louisiana Purchase Exposition, in 1904, for which service he was awarded a medal and diploma by the latter, and the Philippine Insular Government conferred upon him a medal and diploma for service in behalf of its exhibit at the Louisiana Purchase Exposition.

Quoting "Who's Who" of 1910-1911.—"Henry Milton Whelpley was born

at Harmonia (near Battle Creek) Michigan, May 24, 1861; son of Jerome Twining (M. D.) and Charlotte (Chase) Whelpley. He was educated in Illinois and Michigan; graduated from St. Louis College of Pharmacy in 1883; from Missouri Medical College in 1890; from St. Louis Post Graduate School of Medicine in 1894; married Laura E. Spannagel, of St. Louis, 1892. Professor of Microscopy since 1884, and Dean of St. Louis College of Pharmacy since 1904; Lecturer on *Materia Medica* and Pharmacy 1886-1890. Professor of Physiology, Histology and Microscopy, Director of Biological Laboratory and Secretary of Missouri Medical College and St. Louis Post-Graduate School of Medicine; Professor of *Materia Medica* and Pharmacy, Medical Department of Washington University, since 1890; same at Missouri Dental College 1900-1903."

In a comprehensive sketch by Dr. James H. Beal, of Dr. H. M. Whelpley, in *JOURNAL OF THE AMERICAN PHARMACEUTICAL ASSOCIATION* for December 1921, pp. 921-923, the memberships in societies, associations and clubs are given—not so far from fifty; in a number of these the deceased, at different periods, held office and he was not inclined to hold membership in organizations in which he did not take an active part. It was his systematic way of doing things that enabled him to share in so many activities.

His work in the *AMERICAN PHARMACEUTICAL ASSOCIATION* is part of the *ASSOCIATION'S* record; twenty or more titles of papers will be found in the Index of the *PROCEEDINGS*, and each volume of the *JOURNAL* speaks of his contributions to and participation in the proceedings of the *ASSOCIATION*; he became a member in 1887 and was elected Secretary of the section on Pharmaceutical Legislation; in 1888 he served as Secretary of the Scientific Section, in 1889 as its Chairman; in 1893, he served as General Secretary for the late John M. Maisch; from 1902-1908 he was Secretary of the Council; in 1908, he was elected Treasurer and served until 1921; elected President in 1901, he presided over the Golden Anniversary meeting in Philadelphia and presented a most interesting historical address. He was a member of the Council at the time of his demise, and held an unbroken record of membership.

The 1925 Remington Honor Medal was awarded to Dr. Whelpley; in his address of acceptance he recalled interesting events of the years during which he had been member of the *ASSOCIATION* and spoke feelingly of his associates. He took a deep interest in the Headquarters project; in 1913 he read a paper before St. Louis Branch A. Ph. A. on "The Proposed A. Ph. A. Home." He aided largely in the organization and promotion of the House of Delegates.

In 1905-1906 he served as President of the American Conference of Pharmaceutical Faculties, and was active in the organization of the National Association of Boards of Pharmacy. By his death a vacancy is created in the Board of Trustees of the U. S. P. Convention, of which he was Secretary since 1900.

Mrs. Whelpley accompanied her husband to the *ASSOCIATION* meetings and is about as closely associated with the annual events as her lamented husband—the sympathy of the membership goes out to her in her sorrow, with a prayer that she may have strength to bear her great bereavement, in which the *ASSOCIATION* shares and many of its members feel the loss of a friend, teacher and co-worker. President L. L. Walton states in a letter, "I am much pained to learn of the death of Ex-President Whelpley. I feel that the *AMERICAN PHARMACEUTICAL ASSO-*

CIATION has suffered the loss of one of its most devoted and valued members. I should like to have everything done according to the proprieties and show the esteem in which he was held by the ASSOCIATION."

Dr. James H. Beal, one of the intimate friends of the deceased, spoke of him as follows, when he, on behalf of the AMERICAN PHARMACEUTICAL ASSOCIATION, presented Dr. and Mrs. Whelpley with a chest of silver and a watch as an expression of love and appreciation when the former retired from his office as treasurer of the AMERICAN PHARMACEUTICAL ASSOCIATION: "My friends, I have known Dr. Whelpley under many and various circumstances; in fair weather and in foul; in summer's heat and winter's cold. I have traveled with him many thousands of miles by land and water. I have slept with him under a tent and under the open sky. I have known him under all sorts of conditions and if he has within himself a vein of self-seeking or has ever done anything intended to advance his own interests in preference to those of the ASSOCIATION, it has been so perfectly concealed that I have never been able to discover it."

Ex-Treasurer Whelpley, in his response, stated it would require a volume to review his experiences which have interested him. He said, "I find as an outstanding feature an increased faith in human nature. I have not only learned to love my fellow-men better but to have more faith in the endeavor of every individual to do what is best in this ASSOCIATION."

The foregoing quotations will serve as the closing words of this sketch, to which, doubtless, other members of the ASSOCIATION will in conversation or writing add their appreciation.

The following closing record is made:

Dr. Whelpley attended the recent meeting of the Missouri Pharmaceutical Association in Kansas City, at which time he gave an historical review. He was for more than a quarter of a century Secretary of the Association, for some years historian, and elected *First Vice-President* at the recent meeting.

He became ill at the convention, suffering from acute indigestion, and died June 26, at the home of Mrs. J. P. Quinn, at Argentine, Kansas (near Kansas City), where Mr. and Mrs. Whelpley were guests during the meeting. Besides the widow, two sisters, Miss Cecilia Whelpley and Mrs. E. J. Lijegren, and two brothers Wilbur and Warren Whelpley, survive.

The funeral services were held at Wagoner's Chapel, St. Louis, June 29, at 2.00 P.M. President L. L. Walton appointed the following members a committee to represent the AMERICAN PHARMACEUTICAL ASSOCIATION: Carl F. G. Meyer, Charles E. Caspari, Charles Gietner, of St. Louis, William Mittelbach, Booneville, Mo. and D. V. Whitney, Kansas City. Chairman of the Council and Treasurer of the U. S. Pharmacopœial Convention Samuel Hilton and wife, Ex-President James H. Beal came from Florida to attend the funeral services, Secretary H. C. Christensen represented the National Association of Boards of Pharmacy, and many were in attendance from adjoining states to pay honor with citizens and members in Missouri to their friend and co-worker.—E. G. E.

EDITOR'S NOTE: Tributes to the memory of the deceased have been received in the JOURNAL office and others who wish to contribute are invited to do so; a symposium of these brief expressions will be published in the August number.